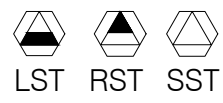


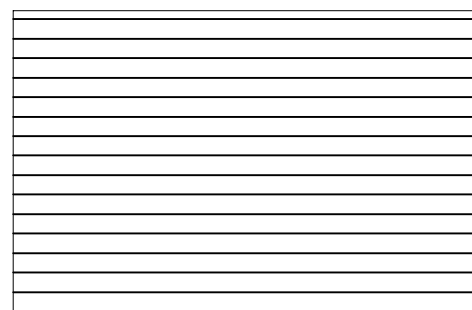
IRRIGATION SCHEDULE 2.20

PZ23-12000055
04/16/2025

SYMBOL



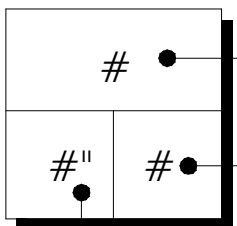
SYMBOL



SYMBOL



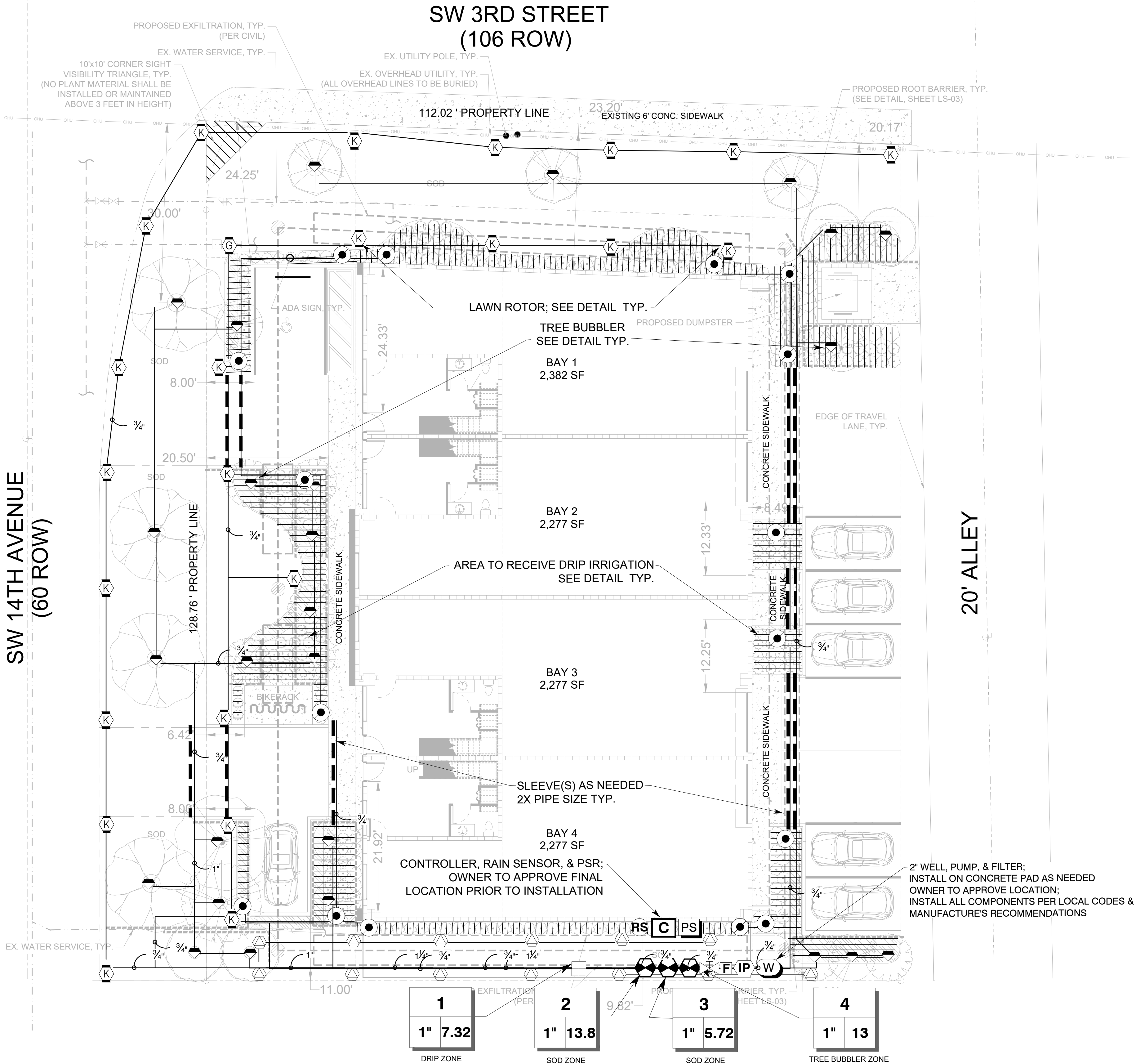
Valve Callout



Valve Number
Valve Flow
Valve Size

***Quantities to be field verified by contractor**
***All items listed may be substituted with LA/Owner approved equal**
***See sheet IRR-02 for irrigation details & specifications**

MANUFACTURER/MODEL/DESCRIPTION	QTY	PSI
Hunter MP Strip PROS-06-PRS40-CV-F Turf Rotator, 6" pop-up with factory installed check valve, floguard, pressure regulated to 40 psi, MP Rotator nozzle on PRS40 body. LST=Ivory left strip, SST=Brown side strip, RST=Copper right strip.	13	40
Hunter MP2000 PROS-06-PRS40-CV-F Turf Rotator, 6" pop-up with factory installed check valve, floguard, pressure regulated to 40 psi, MP Rotator nozzle on PRS40 body. K=Black adj arc 90-210, G=Green adj arc 210-270, R=Red 360 arc.	24	40
Hunter PROS-00-PCN 10 Flood Bubbler, on a PROS-04	26	30
MANUFACTURER/MODEL/DESCRIPTION	QTY	
Hunter ICZ-101-25 Drip Control Zone Kit. 1" ICV Globe Valve with 1" HY100 filter system. Pressure Regulation: 25psi. Flow Range: 2 GPM to 20 GPM. 150 mesh stainless steel screen.	1	
Pipe Transition Point in Drip Box	16	
Area to Receive Dripline Hunter HDL-06-18 On-Surface Pressure Compensating Landscape Dripline. 0.6 GPH emitters at 18" O.C. Dripline laterals spaced at 18" apart, with emitters offset for triangular pattern.	1,096 lf	
MANUFACTURER/MODEL/DESCRIPTION	QTY	
Hunter PGV-100G-S 1" Plastic Electric Remote Control Valve, for Residential/Light Commercial Use. Slip x Slip. Globe Configuration, No Flow Control.	3	
Gate Valve Aqualine Gate Valve or approved equal	1	
Hunter PCC-600 Light Commercial & Residential Controller, 6-Station fixed controller, 120 VAC, Outdoor model	1	
Hunter RAIN-CLIK Rain Sensor, with conduit installation, mount as noted. Normally closed switch.	1	
Goulds Centrifugal Pump 1.5 HP	1	
Vu-Flow Filter Filter	1	
2" PVC Well W	1	
Pump Start Relay Hunter PSR	1	
Irrigation Lateral Line: PVC Class 200	1,757 lf	
Irrigation Mainline: PVC Schedule 40	25 lf	



- The irrigation system shall be installed in accordance with requirements of the Building Code.
- The irrigation system rain-sensing cutoff device shall be located and installed so that building eaves, balconies, and similar overhangs do not interfere with effective operation of the device.
- The irrigation system shall be properly maintained in good working order and provide a minimum coverage of 100 percent with 50 percent overlap.
- Contractor to field locate mainline & laterals as needed to avoid conflicts with civil or landscape items.



Project Team

Landscape Architect:

LANDSCAPE ARCHITECTURAL SERVICES, LLC

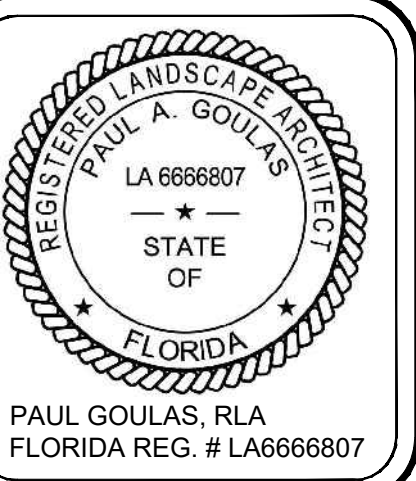
Brandon White | Owner
772-834-1357 | brandon@las-fl.com
Paul Goulas | Owner
772-631-8400 | paul@las-fl.com
1708 SE Joy Haven Street
Port St. Lucie, FL 34983
Architect / Applicant:

LLR Architects, Inc.
ARCHITECTURE & PLANNING
12980 S.W. 52 STREET
MIRAMAR, FLORIDA 33027

(OFF.) - 305-403-7926
(CELL) - 786-543-0851
E-MAIL: LLAR08@LLARB08ARCHITECTS.COM

Proposed Warehouse
SW 3rd Street, Pompano Beach, FL 33069
Irrigation Plan

Revisions		
Date	Init.	Description
02.20.25	PG	Submittal



Drawn By: DC
Checked By: PG
Municipal Project:
Scale:

SCALE: 1" = 10'
0 5' 10' 20'

IRR-01